

FLASHCUT CNC

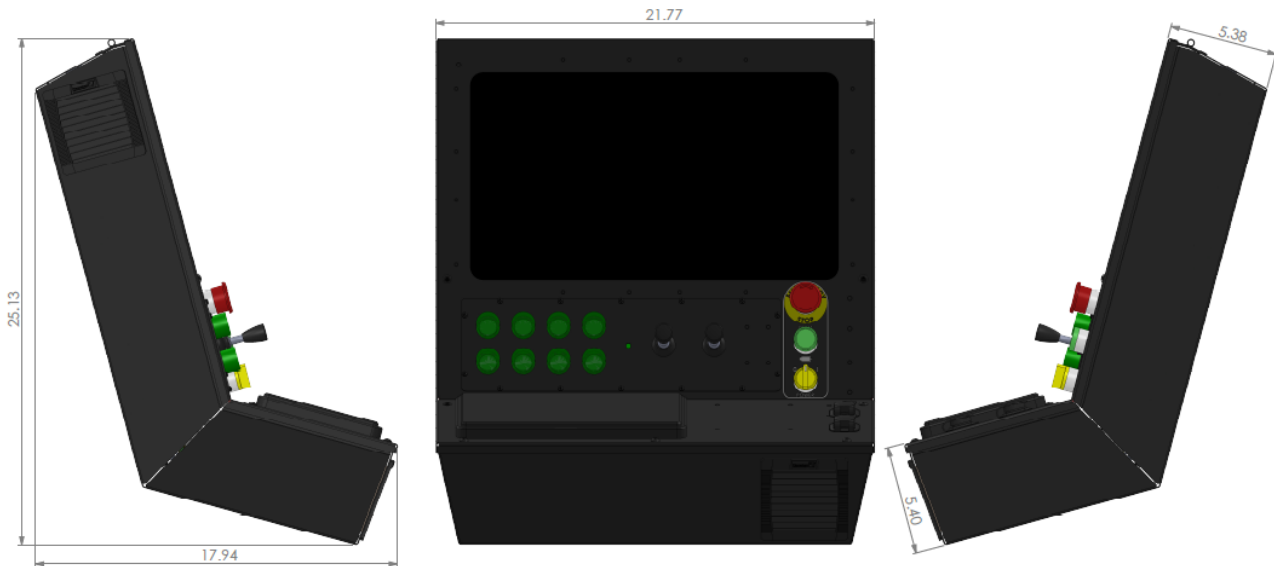
CONTROL MADE SIMPLE

CAD/CAM/CNC Software and Controls

Titanium Series CNC Control Console



**Industrial All-In-One Servo or Microstepping
Motion Controller and CNC Control Panel**

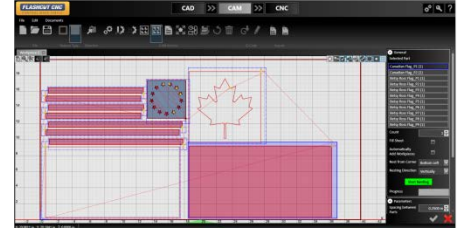


- All-in-one ergonomic industrial CNC console with sealed steel construction.
- 8A advanced microstepping or 25A peak digital PID servo for up to 5 axes of motion control.
- Pedestal mounting with bottom access to all connections reducing exposed cabling on machine.
- Hinged top access for easy maintenance.
- Integrated E-Stop and Reset buttons and optional external control switches for over 10 functions including Cycle Start, Feed Hold, Jogging Joy Stick, File Load, Output Line Control.
- Integrated Stingray® plasma torch height control follows the sheet surface at the precise height
- Real time visualization of toolpath and torch voltage settings.
- Completely integrated FlashCut CAD/CAM/CNC enables you to easily draw a 2D part, create the toolpath with lead-ins and outs, nest and cut.
- DXF import, image import and shape library with a multitude of shapes.
- Integrated cut charts for plasma, oxy and waterjet.
- Automatic kerf crossing detection in THC algorithm prevents diving.
- Optional Laser pointer support for precisely setting program zero, sheet alignment and visually testing toolpath.
- Optional software feature upgrades include: direct communications with Hypertherm® and bar code scanning for easy data input on a shop floor.
- Made in the USA.

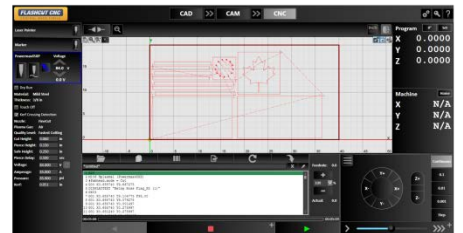
From CAD...



To CAM...



To CNC Control...



	Titanium Servo	Titanium Microstepping
Amperage	12.5A Continuous, 25A Peak	8A with Idle Current Reduction
Technology	Digital PID	Anti-Resonance, Inertia Matching
Voltage Bus	80VDC	70VDC
Input Voltage	Single Phase 120VAC or 240VAC	
Output Lines	(8) 5V TTL or (32) 5V TTL and (2) 0-10V Analog with Optional Expansion Board	
Input Lines	(8) Optically Isolated 5 – 24V or (32) Optically Isolated 5-24V and (1) 0-10V Analog with Optional Expansion Board	
Com Ports	(2) USB, (1) Optional RS485, (1) Ethernet, (1) WiFi	
Computer Specs	5 th generation Intel I3 Microprocessor w/ 8GB RAM, 120GB SSD, Win 10 Pro	
Input Devices	Industrial 19.5" Capacitive Touch Screen, NEMA 4 waterproof keyboard/mouse	